

# SANTA CRISTINA

PROYECTO DE EDIFICIO DE 17 VIVIENDAS, 1 LOCAL,  
GARAJE Y TRASTEROS

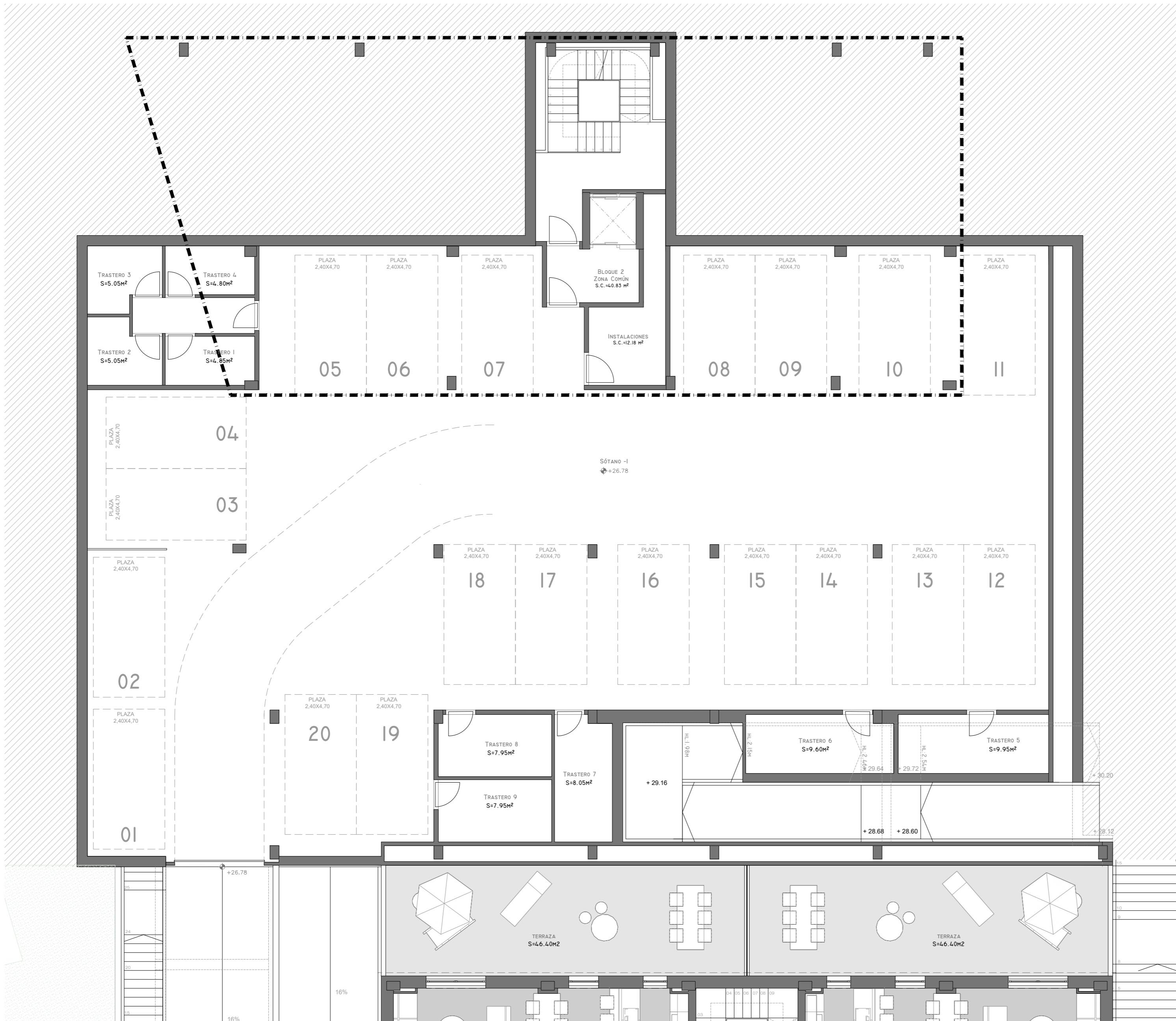
P.E.R.I. VIÑA LONGA

PERILLO - OLEIROS

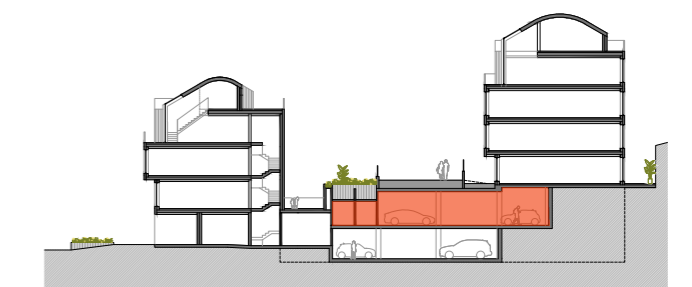


## SÓTANO -I

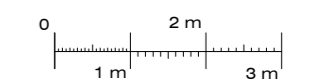
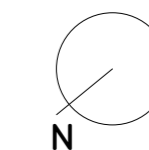
Trasteros	Sup. Útil.
Trastero 1	4.85 m <sup>2</sup>
Trastero 2	5.05 m <sup>2</sup>
Trastero 3	5.05 m <sup>2</sup>
Trastero 4	4.80 m <sup>2</sup>
Trastero 5	9.95 m <sup>2</sup>
Trastero 6	9.60 m <sup>2</sup>
Trastero 7	8.05 m <sup>2</sup>
Trastero 8	7.95 m <sup>2</sup>
Trastero 9	7.95 m <sup>2</sup>



PLAZAS Y TRASTEROS DEL BLOQUE 2



ESCALA GRÁFICA



E. 1/100 (DIN A-2)

Fecha del plano: 15/04/2021